

Tapping point EE55-1-VCR

spectron pur



EE55-1-VCR

Product features

- Tapping point for corrosive gases and gas mixtures with corrosive components from grade 6.0
- Laboratory-style design for easy installation
- High control accuracy
- Pressure regulator with tied diaphragm
- Orbital welded VCR-connections
- Tapping point can be evacuated
- Manual process gas valve (TPI)
- 100 % Helium leak tested
- Assembly in clean room class ISO 5.0

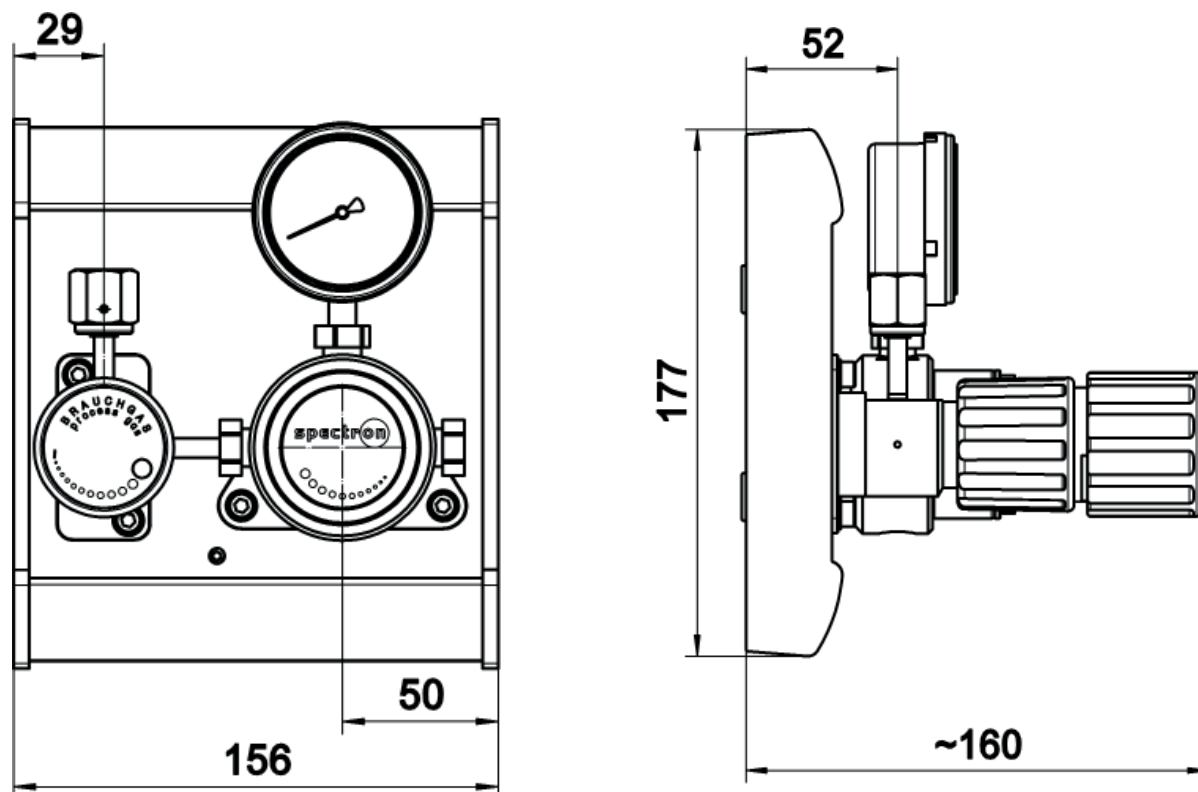
Technical data

Inlet pressure P_1	max. 50 bar
Outlet pressure P_2	max. 1,5 / 4 / 10 bar
Materials	
Body:	Stainless steel 1.4404
Diaphragms:	Hastelloy C276
Other gas wetted parts:	Stainless steel 1.4404
Sealings	
Pressure regulator:	PTFE
Valves:	PCTFE or PVDF
Surface roughness (gas wetted areas)	$R_{a,max} \leq 0,25 \mu\text{m}$
Temperature range	-20°C to +60°C
Leak rate	
to atmosphere:	$\leq 10^{-9}$ mbar l/s He
via valve seat:	$\leq 10^{-6}$ mbar l/s He
c_v-value	$c_v = 0,24$ ($k_v = 0,2$)
Weight	3,0 kg
Connectors	
Inlet:	VCR-female
Outlet:	VCR-female

Tapping point EE55-1-VCR

spectro pur

Dimensions



Ordering information: Tapping point EE55-1-VCR

EE55-1-VCR - 10 - Gas

Outlet pressure P_2

1,5	max. 1,5 bar
4	max. 4 bar
10	max. 10 bar

Type of gas

Please specify type of gas for selection of sealing materials