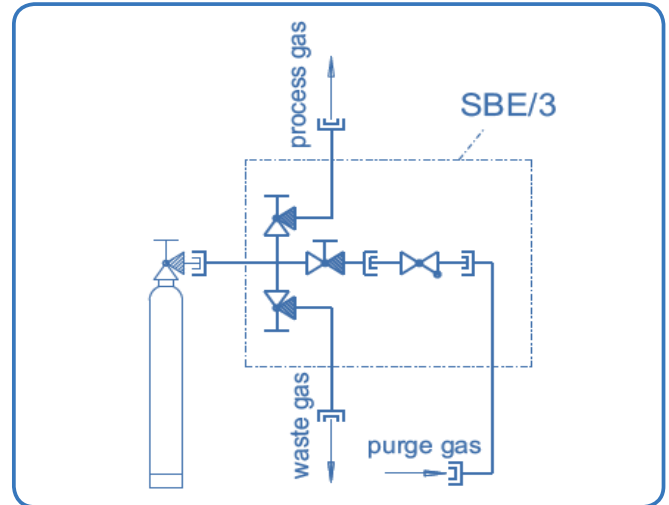




**SBE/3 (without accessories)**  
process gas valve with pneumatic actuator



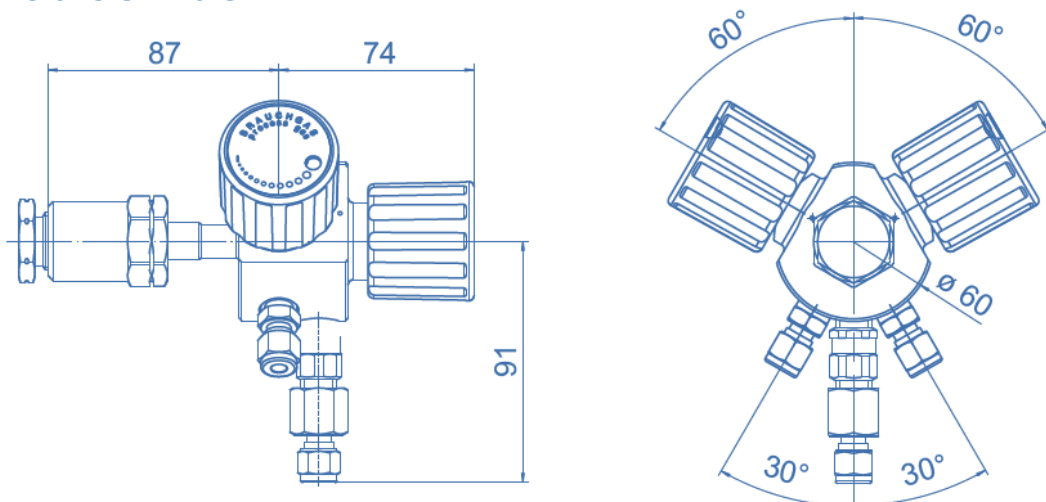
### Product features

- Purge- and connection block for use with high-purity, strongly corrosive or toxic gases in combination with an inert gas purge arrangement
- Minimised purge volume of only 1,4 cm<sup>3</sup>
- With integrated capillary tube (short purge cycles)
- Contaminated purge gas can be vented through waste gas valve without entering the downstream system
- With non-return valve at the purge gas inlet and compression ring fittings
- Available with pneumatic actuators (optional)
- Available with:
  - pressure gauge (for low vapour pressure gases)
  - pressure regulator (mounted onto the purge block)
  - pressure control panel (with pigtail)

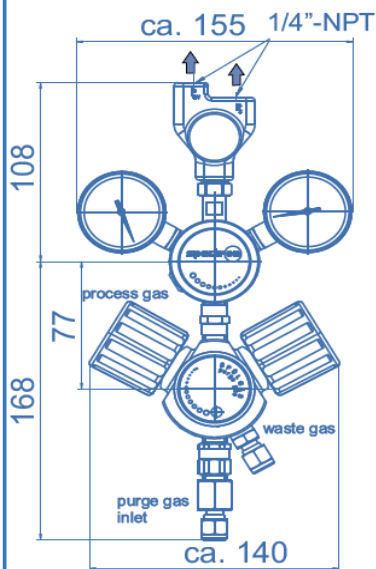
### Technical data

<b>Inlet pressure P<sub>1</sub></b>	max. 300 bar
<b>Materials</b>	
Body:	stainless steel 1.4404
Diaphragm:	Hastelloy C276
Valve seat:	PCTFE or PVDF
<b>Connections</b>	
Cylinder connection:	acc. gas type / standard
In- / outlet:	1/4"-NPT female or 6 mm compr. ring fitting
<b>Temperature range</b>	-20 to +60°C
<b>Nominal diameter</b>	DN 3
<b>c<sub>v</sub>-value</b>	c <sub>v</sub> = 0,13 (k <sub>v</sub> = 0,11)
<b>Leak rate (to atmosphere)</b> (via seat)	≤ 10 <sup>-8</sup> mbar l/s He ≤ 10 <sup>-6</sup> mbar l/s He
<b>Weight</b>	1,6 kg

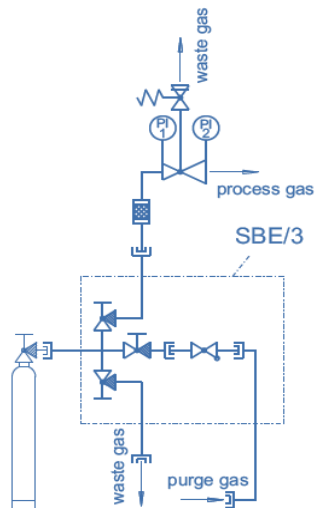
### Dimensions SBE/3-SE



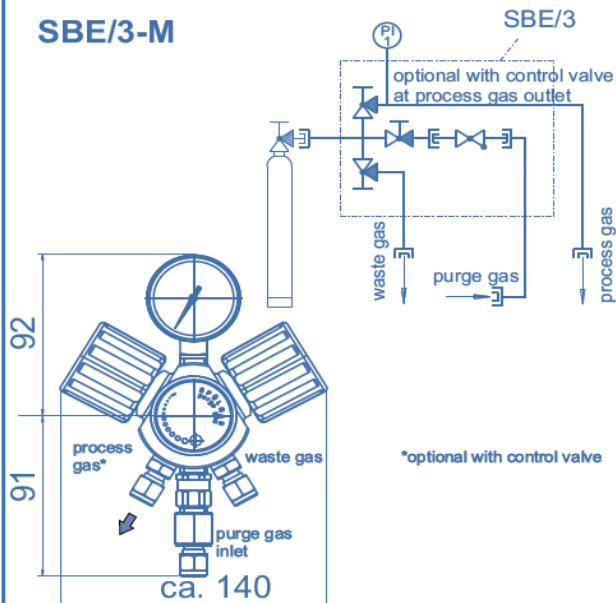
## Dimensions



### SBE/3-E51+53



### SBE/3-M



## Ordering information: Purge- and connection blocks SBE/3

### SBE/3 - SE - DIN8 - F2/He

#### Type

- SE** purge block to be connected with pigtail of pressure control panels SE45/55/125
- M** purge block with pressure gauge for vapour pressure up to 2 bar
- E51/10** purge block with 1-stage pressure regulator up to 10 bar
- E53/1,5** purge block with 2-stage pressure regulator up to 1,5 bar
- E53/4** purge block with 2-stage pressure regulator up to 4 bar
- E53/10** purge block with 2-stage pressure regulator up to 10 bar

**New: pressure regulators with tied diaphragm**

#### Type of gas

Please specify type of gas with your order!

#### Cylinder connection

Detailed specification of the cylinder connection (e.g. BS no. 3)